

# Inkjet Printer Epson L100

**EPSON**  
EXCEED YOUR VISION

Print and save more with  
**the world's first**  
**Original Ink Tank System**



**MICRO  
PIEZO™**

Epson Micro Piezo™ print head technology is built with extreme durability, delivers impressive fast print speed and is both cost and energy efficient. Enjoy high quality prints at a very low cost with the Epson L100 Inkjet Printer.

- **Increase productivity with the all-new Epson Original Ink Tank**  
Ideal for high print volumes. Experience minimal ink changes with the high capacity ink tanks.
- **Assured quality with Epson inks**  
Enjoy high quality prints with Epson's super high capacity inks.
- **Fast Ink Top-up (FIT) Technology reduces ink wastage**  
The Choke Valve prevents backflow or ink leakage during transport. Refilling the ink tank and transporting the printer has never been easier.
- **Peace of mind with Epson Warranty**



The Epson L100 Inkjet Printer comes bundled with a starter kit of 3 bottles x 70ml of black and 3 bottles x 70ml of colour Epson inks, allowing up to 12,000\* prints/up to 6,500\* prints respectively.

\*Based on ISO/IEC24712 pattern with Epson's own methodology

For details, please refer to specifications.



## MICRO PIEZO™

Epson Micro Piezo™ print head technology is built with extreme durability, delivers impressive fast print speed and is both cost and energy efficient. Enjoy high quality prints at a very low cost with the Epson L100 Inkjet Printer.



## Increase productivity with the all-new Epson Original Ink Tank System

The Epson Original Ink Tank System is ideal for high print volumes. With a page yield of up to 12,000<sup>^</sup> pages for black and 6,500<sup>^</sup> pages for colour, the Epson L100 Printer offers great value for money. Specially fitted with filters and tank caps to control airflow and ensure minimal ink wastage from moisture evaporation, the integrated design minimises print head clogging and keeps your work space clean.



## Assured quality with Epson inks

Only Epson high capacity inks assure you of brilliant prints. Every 70ml bottle of Epson super high capacity ink comes with a unique 13-digit code that ensures its authenticity, and a cap for easy storage of any unused ink.

Because they are Epson super high capacity inks, you can be assured of the same vivid colours even after weeks of storage. At only US\$5.50 per Epson ink bottle, you can print and save at the same time.



## Fast Ink Top-up (FIT) Technology reduces ink wastage

No more frequent ink refills, clogged valves or wasted ink with Epson Fast Ink Top-up (FIT) Technology. A Choke Valve controls the ink flow and assures you of more value for every ink bottle you use. Simply lock the device when the printer is not in use or when you are transporting to minimise ink leakage or wastage.



Choke Valve to lock tubes and prevent ink leakage

## Superior print speed for tight schedules



With a draft print speed of up to 27 pages per minute in black, you can cut down waiting time significantly. Printing has never been this efficient and easy.

## Unsurpassed print quality



With a high resolution of 5760dpi, expect exceptionally high, photo-quality prints. In addition, it allows you to create and produce borderless photo prints for all your creative needs.

## Enjoy Peace of Mind with Epson Warranty

Enjoy a one-year or up to 15,000 prints warranty coverage that ensures you get maximum value from your printer without having to worry about its maintenance.

## Achieve photo perfection with Epson Creativity Suite

Create professional and impressive photos and presentations with Epson's dynamic, user-friendly photo editing and enhancement software - Creativity Suite. You can now achieve photo perfection with the following functions:

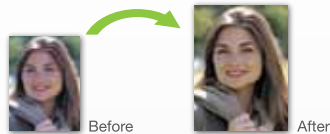
### Red Eye Correction

Eliminate red eye effect and create professional photos instantly with just a click of a button.



### Epson Portrait Enhance

Enhance your portraits with a natural glow and added definition with this unique feature.



### Epson PhotoEnhance

Deliver beautiful and natural photo prints by adjusting the skin tones, colour casts and exposure levels.



## Partners in perfection



### Epson ink bottles

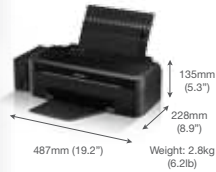
Epson inks are designed specifically to work with your Epson printer to deliver long-lasting prints.



### Epson specialty media

Developed to complement Epson genuine inks in producing exceptionally high quality inks.

## SPECIFICATIONS



\*\*Quoted yields are extrapolated based on Epson original methodology from the print simulation of Test Patterns provided in ISO/IEC 24712. Quoted yields are NOT based on ISO/IEC24711. Actual yields may vary depending on manner of usage and print pattern.

^12,000 is number of black ink yield total based on three black ink bottles alone. 6500 is number of yield based on Cyan, Magenta and Yellow bottles alone.

<sup>1</sup> Print speed (Pages Per Minute) is calculated when printed on A4 plain paper in the fastest mode, 10 x 15 cm photo print speed when printed on Epson Premium Glossy Photo Paper. Print speed may vary depending on system configuration, print mode, document complexity, software, type of paper used and connectivity. Print speed does not include processing time on host computer.



#1  
Black text

#2  
Black text  
and graphics



#3  
Photo 4R  
(4" x 6")

<sup>2</sup> When printed on Epson Premium Glossy Photo Paper

<sup>3</sup> Via custom setting. Otherwise 3mm top, left, right, bottom



EPSON is the registered trademark of Seiko Epson Corporation.

All other product names and other company names used herein are for identification purposes only and are the trademarks or registered trademarks of their respective owners.

EPSON disclaims any and all rights in those marks. Scan/Print samples shown herein are simulations. Specifications are subject to change without notice.

<b>PRODUCT CODE</b>		C11CB43406
<b>PRINTER TYPE</b>		
PRINTING METHOD		On-demand ink jet (piezoelectric)
NOZZLE CONFIGURATION		90 nozzles Black, 29 nozzles, each color (Cyan, Magenta, Yellow)
PRINT DIRECTION		Bi-directional printing, Uni-directional printing
<b>PRINTER FUNCTION</b>		
MAXIMUM RESOLUTION		5760 x 1440 dpi (with Variable-Sized Droplet Technology)
MINIMUM INK DROPLET VOLUME		4 pl
PRINT SPEED <sup>*1</sup>		
BLACK TEXT MEMO (A4)		Approx. 27 ppm (Draft) <sup>#1</sup>
COLOUR TEXT MEMO (A4)		Approx. 15 ppm (Draft) <sup>#2</sup>
PHOTO 10X15CM (4X6IN) <sup>*2-3</sup>		Approx. 66 sec per photo (W/Border)
<b>PAPER HANDLING</b>		
PAPER FEED METHOD		Friction feed
PAPER HOLD CAPACITY		INPUT CAPACITY
		100 sheets, A4 Plain paper (75g/m2)
		10 sheets, Equal or smaller than 4x6in/10x15cm, Premium Glossy Photo Paper/Premium Presentation Paper Matte
		1 sheet, Larger than 4x6in/10x15cm, Premium Glossy Photo Paper/Premium Presentation Paper Matte
		OUTPUT CAPACITY
		50 sheets, A4 Plain paper (75g/m2)
		8.5" X 44"
		0mm top, left, right, bottom via custom settings in printer driver <sup>*3</sup>
<b>COLOUR MATCHING</b>		ICM Profiles (Windows), AdobeRGB (Windows and Mac), ColorSync2.0 Compatible (Mac)
<b>NOISE LEVEL</b>		
LWAD : 5.3B(A)		Measurement: according to ISO7779 Pattern with PGPP/Photo RPM mode
LPAM : 37.6dB(A)		Calculation: according to ISO9296
<b>ELECTRICAL SPECIFICATIONS</b>		
RATED VOLTAGE		AC 220-240V
RATED FREQUENCY		50/60 Hz
POWER CONSUMPTION		
WHILE PRINTING ISO/IEC 24712 PATTERN		AC220-240V, Approx. 10.1W
READY MODE		AC220-240V, Approx. 2.5W
SLEEP MODE		AC220-240V, Approx. 1.2W
POWER OFF MODE		AC220-240V, Approx. 0.6W
<b>PRINTER INTERFACE</b>		
USB		USB - Compatible with the USB 2.0 Specification
<b>INPUT DATA BUFFER</b>		32KB
<b>PRINTER SOFTWARE ON CD-ROM</b>		
OPERATING SYSTEM COMPATIBILITY		Windows XP/XP Professional x64 Edition/Vista/7 (No Mac OS Support)
ON-LINE GUIDE		Yes
PRINTER DRIVERS		Yes
<b>EPSON GENUINE INK BOTTLE</b>		<b>PAGE YIELD**</b>
BLACK		4000
CYAN		T6641
MAGENTA		T6642
YELLOW		T6643
		6500
		T6644
<b>EPSON SPECIALTY MEDIA</b>		<b>ORDER CODE</b>
MATTE PAPER HEAVYWEIGHT A4		C13S041259
GLOSSY PHOTO PAPER 4R		C13S042070
GLOSSY PHOTO PAPER A4		C13S042071
PREMIUM GLOSSY PHOTO PAPER 4R		C13S041863
PREMIUM GLOSSY PHOTO PAPER A4		C13S041285
PHOTO QUALITY INKJET PAPER A4		C13S041786
PREMIUM SEMIGLOSS PHOTO PAPER 4R		C13S041925
PREMIUM SEMIGLOSS PHOTO PAPER A4		C13S041332
<b>MINIMUM SYSTEM REQUIREMENT &amp; OPERATING SYSTEM (OS) SUPPORT</b>		
SYSTEM REQUIREMENT		
WINDOWS SUPPORT		Windows XP/XP Professional x64 Edition/Vista/7
MAC SUPPORT		N/A