

Take more
than pictures.
Take stories.

IXUS

PowerShot

SELPHY

COMPACT PHOTO PRINTER

you can

BACK

PRINT



Canon

Take more than pictures.
Take stories.

IXUS

Cameras to treasure

With sleek, tactile designs made from the best materials, every IXUS fuses technology and style giving you satisfaction with every shot.

Unique IXUS styling houses the latest in imaging advances – from innovative compact high zooms to the powerful HS System for excellent performance in low-light. Included in each model are intelligent technologies that work behind the scenes to guide you to great photos every time you press the button.

PowerShot

Excellence and ease

The perfect camera is one that makes photography a pleasure. With the PowerShot range, you'll find a high performance model to suit every ability.

From one-touch shooting to manual control, enjoy slim, pocket-size design or customise with a range of accessories from Speedlite flash to Lens Filter Adapters.

No matter which model you choose, every PowerShot blends Canon's leading-edge innovation and world-class optics with brilliantly intuitive design.

SELPHY

COMPACT PHOTO PRINTER

Bring your memories to life

With a SELPHY Compact Photo Printer you can produce lab-quality long-lasting prints in seconds from any digital photo as well as have fun with a range of creative effects, frames, layouts and print sizes.

Easy enough for everyone to use, a SELPHY is a high quality, convenient and cost-effective way to bring your memories to life.



Every Canon digital camera benefits from 70 years of optical excellence to deliver outstanding results. Unique lens coatings, design and precise manufacturing result in images of the highest quality that Canon is renowned for.

Lens Know-How

Canon's heritage can be seen in every one of the lenses it makes. Innovation is at the forefront of our brand and we are constantly evolving new technologies to allow optics to be highly compact and yet still deliver stunning optical clarity and sharpness.

Canon's range of digital compact camera lenses share designs, materials, manufacturing and quality testing with all other Canon optics such as TV broadcast and EOS EF lenses - trusted by millions of professionals throughout the world. Pioneering Canon-developed technologies like the optical Image Stabilizer (IS) keep shots free from blur and Ultrasonic Motor (USM) aids quick and silent zooming to offer further improvements in image quality and response times. Add to that an extensive range of zooms - covering everything from 24mm wide-angle to 35x zoom - and it's clear to see that Canon offers the ultimate in flexible and powerful products.



With Optical Image Stabilizer



Without Optical Image Stabilizer



Bye Bye To Blur

When shooting with the zoom extended or in dark conditions, camera shake is likely - increasing the possibility of blur. Recognising this, Canon developed the optical Image Stabilizer (IS) which uses minute vibration gyros to detect camera movement. Elements in the lens are then moved to counter camera shake and capture an image with drastically reduced blur.

Our optical Image Stabilizer is now effective to 4.5 stops in the PowerShot SX30 IS so you can shoot at approximately 4.5 shutter speed steps slower than a camera without IS and still get a shake free image. Dynamic IS and Hybrid IS were pioneered to combat blur in specific shooting conditions. Dynamic IS assesses low-frequency vibrations, such as walking, to produce much steadier video footage when the photographer is in motion, while Hybrid IS corrects linear movement which specifically causes problems during close-up macro shooting.

OPTICAL
IMAGE
STABILIZER

OPTICAL
IMAGE
STABILIZER
DYNAMIC

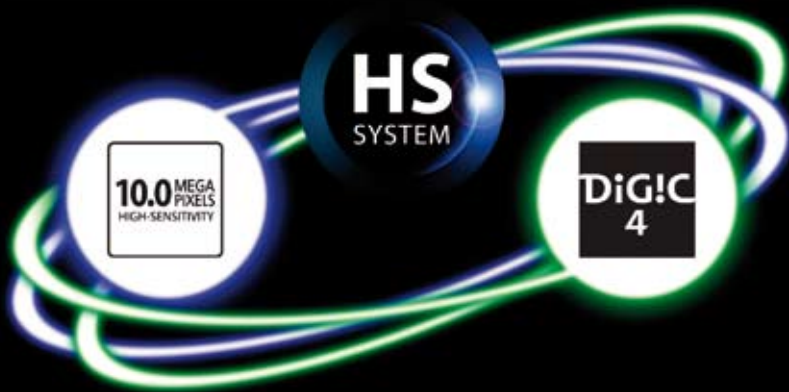
HYBRID IS
HYBRID IMAGE STABILIZER



HS System

The IXUS 300 HS, IXUS 1000 HS, PowerShot G12 and PowerShot S95 all feature Canon's innovative HS System, a cutting edge combination of high-sensitivity sensor and DIGIC 4 processor which work together to give premium Canon image quality even in low light. This reduces the need to shoot with a flash or a tripod, allowing you to capture the real, natural atmosphere of the moment.

The optimised combination of sensor and DIGIC 4 processor is the key to HS System's amazing low light results. As well as the latest sensor technologies, the modest 10MP resolution means that each pixel is larger than on higher resolution models. Bigger pixels can capture more light and this increased sensitivity leads to clearer, more refined images with less unwanted noise.



Low light conditions

HS System truly excels in low light conditions and is able to overcome common low light shooting problems such as capturing a well exposed subject against a dark, night-time background or capturing a moving subject when shooting indoors.



Night portrait **with** HS System



Night portrait **without** HS System

DIGIC 4

DIGIC 4 Processing

Canon's DIGIC processor is the brain inside every Canon digital camera – working with the image sensor to ensure optimum quality and fast operation, as well as powering intelligent technologies such

as Face Detection and Motion Detection Technology. DIGIC 4 is Canon's most advanced, offering near-instant startup, superb detail and low noise (even at high ISO) plus enhanced movie functionality.



CMOS Sensor

The IXUS 300 HS and IXUS 1000 HS use back-illuminated CMOS sensors. These capture more light than conventional CMOS sensors and perform better in low light. CMOS also enables high speed shooting performance like fast continuous shooting, High Speed Burst and Super Slow Motion Movie.

Image quality
with HS System

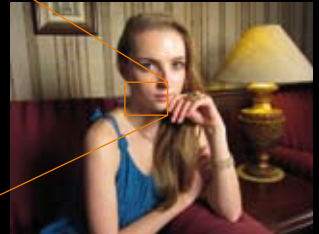
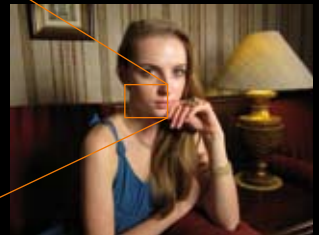


Image quality
without HS System



Smart AUTO

Smart Auto

Smart Auto mode with Scene Detection technology makes taking great pictures easier than ever. It automatically detects people, movement and scene types from up to 28 variables and applies the best settings for optimum pictures – perfect for those moments when you want to just point and shoot. For night shots it detects if the camera is on a solid surface, such as a tripod, and uses a lower ISO for better image quality. Smart Auto mode also increases an image's dynamic range – avoiding overexposed hot-spots on bright scenes – and reducing dynamic range in low-contrast scenes to improve contrast.



Without Smart Flash Exposure



With Smart Flash Exposure

Smart FE

Natural shots with Smart Flash Exposure

Smart Flash Exposure intelligently controls flash output and usage, for natural-looking results in a variety of conditions. Focusing distance and scene information are used to achieve an optimum balance between the ambient light in a scene and flash power. In very bright conditions the camera can detect shadows on a subject's face, and use the flash to eliminate them. When shooting up close, overexposure is avoided by analysing the subject and reducing the flash power to compensate.



Without i-Contrast



With i-Contrast



i-Contrast

Bringing out the hidden details in your subject is easy with i-Contrast. Powered by DIGIC, it works in either shooting or playback modes to brighten dark areas for a natural result with minimal noise. Intelligent processing also ensures that lighter areas are not blown out – so it's ideal for backlit subjects and other shots with a lot of shadow.



Miniature Effect



Smart Shutter

Smart Shutter is a great way to trigger a shot without having to use a remote or ask someone else. Smile mode automatically shoots when a smiling face is detected; Wink Self-timer automatically shoots 2 seconds after a wink is detected and Face Self-timer detects the faces in the scene and releases the shutter 2 seconds after an additional face has entered the frame.



Creative Shooting Modes

New shooting modes make photography even more fun: Fish-eye Effect allows you to shoot with the effect of a fish-eye lens in three different levels of strength; Miniature Effect, for stills and movie modes, makes ordinary subjects look like small-scale models; Super Vivid boosts the colour saturation of the image while Poster Effect reduces the tonal gradation of your image making them look like old retro posters.

When shooting in darker situations the dedicated Low Light mode can further extend the camera's ability to capture light by shooting at a reduced resolution, so even in the darkest of conditions you can still obtain a great result.

FULL HD

HD Movies

Most cameras in the range include 720p HD Movie shooting with the IXUS 1000 HS offering Full HD (1080p) with stereo sound for stunning video clarity and sound capture. Zoom in on your subjects with ease and let Dynamic IS reduce movement and shake. Give your movies a professional, refreshing touch by using the optical zoom whilst recording. Playback is also easy thanks to the HDMI connector which makes it easy to playback direct from the camera to your HD television with no loss of quality.


IXUS



Celebrating ten years of digital IXUS style

Each IXUS combines exquisite, tactile design and metal bodies with Canon's visionary technologies - for cameras that look as good as the pictures they take. Now in its tenth year, the models in the IXUS digital camera range are more powerful than ever and look as good around your neck as they do in your hand.





Pushing the boundaries with 10x optical zoom, the IXUS 1000 HS retains a beautifully styled, compact metal body. Impress everyone with HS System image quality, Full HD movies and high-speed shooting.

Available in three stylish colours

10x zoom IXUS style

Key features

The first 10x optical zoom IXUS, with optical Image Stabilizer

Stylish compact IXUS with metal body in three colour options*

Excellent image quality in low light using HS System with 10.0 Megapixel high-sensitivity CMOS

Full HD movies (1080p) with optical zoom, stereo sound, Dynamic IS and HDMI

240 fps Super Slow Motion Movie. High-speed Burst: 8.8 shots/sec**

Wide 7.6 cm (3.0") PureColor II G LCD with enhanced strength and visibility

Smart Auto detects 28 scene types and optimises settings

Best Image Selection, Handheld Night Scene and Miniature Effect movie

Smart Shutter with Wink Self-Timer

Hints & Tips explain functions and menu options

* Some colour variations may not be available in some regions

** Some high-speed modes output at reduced resolution.



10.0 MEGA PIXELS
HIGH-SENSITIVITY
CMOS

OPTICAL
IMAGE
STABILIZER
DIGITAL

7.6 cm
3.0"
PureColor II G
WGL LCD

IXUS 1000 HS



10x
OPTICAL
ZOOM

FULL
HD

With the flagship IXUS a powerful 10x optical zoom allows you to capture every moment. Now Full HD movie capability means that your unforgettable moments will be enjoyed in their full glory in the 1080p resolution of an HDTV.

IXUS 300 HS

High Speed High Impact



Available in three stylish colours

Powered by a 10 Megapixel high-sensitivity CMOS sensor with f/2.0 lens, and molded in a distinctive stainless steel body, the high speed IXUS 300 HS has stunning looks and image quality to match.

f/2
LENS

The IXUS 300 HS is equipped with a bright f/2.0, 3.8x wide optical zoom, capable of beautiful, low light images with reduced risk of blur. A wide aperture can be used to shoot a sharp subject against an out-of-focus background for creative results.

Key features

High performance IXUS in a stunning stainless steel body

10.0 Megapixel high-sensitivity CMOS

Bright f/2.0, 28 mm, 3.8x genuine Canon lens with optical Image Stabilizer

HS System with DIGIC 4 for fast shooting and low noise in low light

240 fps Super Slow Motion Movie. High-speed Burst: 8.4 shots/sec*

Wide 7.5 cm (3.0") PureColor II G LCD with enhanced strength and visibility

Smart Auto and Smart Flash Exposure for great photos in all situations

HD movies (720p) with optical zoom, stereo sound and HDMI

Creative shooting with P, Av and Tv modes, Low Light, Fish-eye and Miniature Effect

Smart Shutter with Smile, Wink Self-Timer and FaceSelf-Timer

*Some high-speed modes output at reduced resolution.



IXUS 210



Stunning images at your fingertips

Available in four stylish colours.

Offering a compelling blend of photographic features and effective technologies, the IXUS 210 combines an ultra-wide 24mm Canon lens, advanced touch screen and HD movies in a stylish metal body.

Key features

Stylish, 14.1 Megapixel, metal body IXUS in four colour options*

Genuine Canon 24mm ultra wide-angle 5x zoom lens with optical Image Stabilizer

Wide 8.8 cm (3.5") PureColor II Touch LCD with touch control

Touch AF, custom icon layout and tap control

Easy to use with Smart Auto, Face Detection and on-screen Hints & Tips

HD Movies (720p) and HDMI connection

Smart Shutter with Smile, Wink Self-Timer and FaceSelf-Timer

Smart Flash Exposure and i-Contrast for best results in all situations

DIGIC 4 and Servo AF/AE for ultra-fast response and high image quality

Shooting modes including Low Light, Fish-eye, Miniature and Creative Light Effect

*Some colour variations may not be available in some regions

8.8 cm
3.5"
Wide Touch

A touch screen display enables intuitive control of numerous camera functions. When shooting, Touch AF enables you to track focus on a subject by touching the screen, while easily selectable icons allow changes to the shooting and flash modes.

14.1
MEGA
PIXELS

24mm
WIDE
5x

OPTICAL
IMAGE
STABILIZER

HD
MOVIE

Smart
AUTO

IXUS 130



Available in four stylish colours

Slim, smooth and distinctively IXUS

The ultra-slim IXUS 130 delivers intelligent Canon technologies in a striking smooth body. 28mm wide-angle lens, Smart Auto and HD movies make it easy to take stunning shots.

Key features

Ultra-slim metal IXUS with sleek design in four colour options*

14.1 Megapixels

Genuine Canon 28mm wide-angle 4.0x zoom lens with optical Image Stabilizer

6.9 cm (2.7") PureColor II G LCD with enhanced strength and visibility

Easy to use with Smart Auto, Face Detection and on-screen Hints & Tips

HD Movies (720p) and HDMI connection

Smart Shutter with Smile, Wink Self-Timer and FaceSelf-Timer

Smart Flash Exposure and i-Contrast for best results in all situations

DIGIC 4 and Servo AF/AE for ultra-fast response and high image quality

Creative photos with Low Light, Fish-eye and Miniature Effect

6.9 cm
2.7"
PureColor II G
LCD

For easy framing, sharing, and menu navigation, many models including the IXUS 130 features a PureColor II G LCD – its tempered glass layer strengthens the surface against knocks and scrapes and improves visibility.

*Some colour variations may not be available in some regions

14.1
MEGA
PIXELS

28mm
4x
OPTICAL
IMAGE
STABILIZER

OPTICAL
IMAGE
STABILIZER

HD
MOVIE

Smart
AUTO



IXUS 105

15
SHOOTING
MODES

15 shooting modes are available in the IXUS 105, including Night Snapshot for great night shots with well exposed background and subject plus Low Light, for great shots in even darker conditions without flash.

Effortless IXUS style

The IXUS 105 brings a great combination of ease of use, high image quality and IXUS design that stands out from the crowd. Capture stunning detail with 12.1 MP, 28mm wide-angle and Smart Auto.

Key features

12.1 Megapixel IXUS with compact metal body in four colour options*

Genuine Canon 28mm wide-angle 4x zoom lens with optical Image Stabilizer

6.8 cm (2.7") PureColor LCD II

Smart Auto with Smart Flash Exposure and Scene Detection Technology for great looking photos in all situations

Face Detection, FaceSelf-Timer & Auto Red-Eye Correction

Combats blur with ISO Auto, Motion Detection Technology and IS

i-Contrast helps retain shadow and highlight detail

DIGIC 4 processing for ultra-fast response and high image quality

Range of shooting modes including Low Light

Smooth, 30fps VGA movies with Long Play for greater recording times

*Some colour variations may not be available in some regions



Available in four stylish colours



12.1
MEGA
PIXELS

28mm
EQUIVALENT
4x

OPTICAL
IMAGE
STABILIZER

6.8 cm
2.7"
PureColor LCD II

30fps / VGA

Smart
AUTO

Excellence and ease

Make photography a pleasure with the camera ideal for you, whatever your level of experience. With the PowerShot range, you're sure to find a camera that mirrors the way you take photos. From fun point-and-shoot cameras to sophisticated superzoom models with full manual control, the affordable PowerShot range lets you take the pictures you want.

G & S Series

Two cameras intended for the most discerning of photographers. The Powershot G and S series are designed to meet the demands of serious enthusiasts and offer total manual control as well as a host of intelligent auto features plus RAW capture, High Dynamic Range mode and Hybrid IS.

For flexibility with accessories, a vari-angle LCD and 5x zoom go for the G series with its professional feel and capacity to handle the most demanding of shots. If it's a more compact body you need, the S series is a high-performer with a stunning f/2.0 lens that works brilliantly in low-light.



PowerShot



SX Series

A dynamic family of super compact super zooms ranging from the extensive, high-end 35x zoom of the PowerShot SX30 IS to the great value family-friendly PowerShot SX130, the PowerShot SX series delivers stunning results with no compromise, bringing HD movies and high quality stills together in one practical body that's easy to use by everyone.



D & A Series

Practical and affordable with a host of great creative features, the PowerShot A series takes Canon's dedication to superb image quality and presents it in a range of easy-to-use, dependable cameras at a great price. Smart Auto and Easy modes make shooting a breeze - and if recording life's more extreme moments is what you're after, the PowerShot D10 offers you a waterproof and shockproof solution.



Key features

Premium image quality in low light using HS System with 10.0 Megapixel high-sensitivity CCD

Canon 5x (28-140mm) lens with optical Image Stabilizer and Hybrid IS

7.0 cm (2.8") vari-angle PureColor II VA LCD with Electronic Level, and optical viewfinder

Full Manual control with Front Dial, ISO adjustment, RAW & DPP software

HD Movies (720p) with stereo sound and HDMI

High Dynamic Range mode for tackling high contrast scenes

Smart Auto detects 28 scene types and optimises settings

Multi-Aspect Shooting (5 settings) for composition and printing options

Optional 58mm Lens Filter Adapter

Accessories include Waterproof Case, Tele-Converter & Canon Speedlites

G series accessories and expandability

Enhance your shooting with Canon's range of Speedlite flashes and accessories for the PowerShot G12. A tele-converter, Lens Filter Adapter (to accept a range of 58mm filters), waterproof case and leather soft cases are all available.



10.0 MEGA PIXELS
HIGH-SENSITIVITY
CCD

28mm
5x

7.0 cm
2.8"
Vari-angle LCD



M
Manual Control

HYBRID IS
HYBRID IMAGE STABILIZER

PowerShot **G12**

The **Benchmark**

The PowerShot G12 gives exceptional images with HS System and a premium Canon wide-angle lens. Full Manual mode, RAW, a new Front Dial and optional Lens Filter Adapter allow professional levels of control.





The pocket camera
for the serious
photographer



With HS System and f/2 lens, the 10.0 MP PowerShot S95 excels in low light. HD Movies, RAW and unique lens Control Ring for quick manual control make it the pocket camera for the serious photographer.

PowerShot S95



Control Ring

Fully customisable to suit your shooting style, the lens Control Ring allows very quick access to a range of useful controls such as aperture, shutter speed, white balance, focus and manual exposure.



Key features

Superior low-light performance with HS System and f/2 lens

High-sensitivity 10.0 Megapixel CCD for all-round outstanding image quality

Canon wide-angle 28mm, 3.8x zoom with optical Image Stabilizer and Hybrid IS

Expert control with ISO range adjustment, lens Control Ring, Full Manual and RAW

7.5 cm (3.0") PureColor II G LCD with enhanced strength and visibility

HD Movies (720p) with stereo sound and HDMI

High Dynamic Range mode for tackling high contrast scenes

Smart Auto detects 28 scene types and optimises settings

Multi-Aspect Shooting (5 settings) for composition and printing options

Underwater shooting to 40m with optional Waterproof Case



10.0 MEGA
PIXELS
HIGH-SENSITIVITY
CCD

f/2
LENS



M
Manual Control

HYBRID IS
HYBRID IMAGE STABILISER



Exceed your ambitions with **35x zoom**

The PowerShot SX30 IS showcases Canon optical expertise with an ultra-wide 35x optical zoom. The range-leading 4.5 stop optical Image Stabilizer and Zoom Framing Assist make high zoom stills and HD movie shooting a breeze.

PowerShot SX30 IS



Key features

35x ultra wide-angle (24-840mm) optical zoom lens for Canon quality telephoto images

Outstanding hand-shake correction with 4.5-stop optical Image Stabilizer, plus USM and VCM for fast, silent focus and zooming

14.1 Megapixels for high detail shots

6.8 cm (2.7") vari-angle PureColor II VA LCD, plus electronic viewfinder

HD Movies (720p) with optical zoom, Dynamic IS, stereo sound and HDMI

Smart Auto detects 28 scene types and optimises settings

Shooting modes include Manual, Low Light and Miniature Effect movie

Zoom Framing Assist helps to quickly find subjects at high zoom

Optional 67mm Lens Filter Adapter

Accessories including Canon Speedlites

24mm
WIDE
35x

A huge 35x zoom range combined with an ultra wide view (35mm equivalent: 24-840mm) makes a superbly versatile lens for all subjects. The Ultrasonic Motor (USM) uses ultrasonic vibrations allowing it to zoom fast, silently and accurately.

OPTICAL
IMAGE
STABILIZER

14.1
MEGA
PIXELS

6.8 cm
2.7"
Vari-angle LCD

STEREO SOUND

M
Manual Control



PowerShot SX210 IS

Super compact super zoom

With a wide-angle 14x optical zoom and Canon optical Image Stabilizer at its heart, plus full manual control and HD movies, the compact PowerShot SX210 IS is an alliance of power and style.

Key features

14x zoom, 28mm wide-angle genuine Canon lens

14.1 Megapixels with compact, metal body in three colour options*

Canon 4-stop optical Image Stabilizer with Dynamic IS

Wide 7.6 cm (3.0") PureColor II G LCD with enhanced strength and visibility

HD Movies (720p) with optical zoom, stereo sound and HDMI

OPTICAL IMAGE STABILIZER DYNAMIC

Give your movies the steady framing of a professional with Dynamic Image Stabilizer. This special lens-shift IS mode counters unwanted shake caused by movement such as walking, allowing you to follow the action with less juddering.

Easy to use with Smart Auto, Face Detection and on-screen Hints & Tips

Smart Flash Exposure and i-Contrast for best results in all situations

DIGIC 4 and Servo AF/AE for ultra-fast response and high image quality

Manual, Av and Tv modes for full creative control

Shooting modes including Smart Shutter, Low Light, Fish-eye and Miniature Effect

*Some colour variations may not be available in some regions

14x
WIDE
ZOOM

14.1
MEGA
PIXELS

HD
STEREO SOUND

Smart
AUTO

M
Manual Control

PowerShot SX130 IS

Easy-to-use superzoom



PowerShot SX130 IS delivers great value, high zoom shooting with 12.1 Megapixels and 12x zoom. Master stills and HD Movies with Smart Auto and Easy modes or get creative with Full Manual control.



Key features

Canon 12x optical zoom with 28mm wide-angle and optical Image Stabilizer to combat camera-shake

12.1 Megapixels for detailed shots and poster-size prints

Easy to use for all the family with Smart Auto and Easy modes - detect 28 scene types and optimise settings

Large 7.5 cm (3.0") LCD with wide viewing angle

HD Movies (720p) with optical zoom and stereo sound

Face Detection including Smart Shutter with Wink Self-Timer

Shooting modes include Full Manual control, Low Light, Fish-eye and Miniature Effect movie

Hints & Tips explain all functions and menu options on screen

Enhanced i-Contrast brings out shadow and highlight detail

Hints & Tips

Helping you to quickly get to grips with your new camera and saving you time spent reading the manual, Hints & Tips provide quick explanations of most menus and functions with their benefits.

28mm
WIDE-ANGLE
12x

OPTICAL
IMAGE
STABILIZER

12.1
MEGA
PIXELS

HD
MOVIE
STEREO SOUND

Smart
AUTO

M
Manual Control





PowerShot SX120 IS

Family-friendly Serious zoom



Ideal for family days out, the 10.0 MP PowerShot SX120 IS brings distant subjects into view with a 10x image-stabilised lens. Smart Auto and Easy modes allow all the family to take great shots.

Key features

Compact, user-friendly 10.0 Megapixel camera

10x optical zoom with optical Image Stabilizer

Smart Auto and Easy modes with Scene Detection Technology - detects 18 different scene types and optimises settings

Large 7.5cm (3.0") LCD with wide viewing angle

DIGIC 4 for fast, intelligent processing and superb image quality

Face Detection, Face Select & Track, FaceSelf-Timer and Auto Red-Eye Correction

Combats blur with ISO Auto, Motion Detection Technology and IS

Enhanced i-Contrast helps retain shadow and highlight detail

20 shooting modes, plus Full Manual control

VGA movies with sound

*Some colour variations may not be available in some regions



This camera is powered by AA-type batteries which are highly convenient, especially for travelling, as they are widely available around the world.

10x
OPTICAL
ZOOM

OPTICAL
IMAGE
STABILIZER

10.0
MEGA
PIXELS

Movie
30fps / VGA

Smart
AUTO

M
Manual Control



PowerShot D10

Pictures from the edge

Waterproof and shockproof, the durable PowerShot D10 brings quality 12.1 MP imaging to active outdoor activities. Keep your hands free and your camera close with a range of great accessories.

Key features

Durable 12.1 MP digital camera

Waterproof (to 10m), shockproof (up to 1.22m) freeze-proof (to -10°C) and dustproof

3.0x optical zoom and optical Image Stabilizer

Smart Auto mode with Scene Detection Technology

DIGIC 4 for responsive operation, high image quality and improved Noise Reduction 6.2cm (2.5") high resolution PureColor LCD II

Combats blur with ISO Auto, Motion Detection Technology and optical IS

Great people shots with Face Detection Technology, FaceSelf-Timer, Auto Red-Eye Correction and Blink Detection

Accessories include Shoulder, Neck and Carabiner Straps, plus Front Cover Set*

Range of shooting modes and Special Scene Modes including movies



10m
33 ft.
Waterproof

1.22m
4.0ft.
Shockproof

-10°C
14°F
Freezeproof

The PowerShot D10 will perform no matter what the elements throw at it. From -10 degrees C to 10m underwater or dropped from a height of up to 1.22m, it can accompany you on your most daring adventures.

*Optional straps not designed for underwater use.

12.1
MEGA
PIXELS

3x
OPTICAL
ZOOM

OPTICAL
IMAGE
STABILIZER

2.5"
LCD
PureColor II

30fps / VGA
Movie

Smart
AUTO

Effortless results, affordable style

The intelligent and compact PowerShot A3100 IS packs Canon image quality into a slim, lightweight body to make shooting a breeze – it's as easy as point and shoot.

PowerShot A3100 IS



Key features

12.1 Megapixel camera with metal exterior in 3 colour variations*

Genuine Canon 4x optical zoom with Image Stabilizer

6.7cm (2.7") high resolution LCD for comfortable shooting and playback

Exceptional ease of use with Smart Auto, Easy mode and on-screen Hints & Tips

People shots made easy with Face Detection, FaceSelf-Timer and Auto Red-Eye Correction

Combats blur with Motion Detection Technology and optical Image Stabilizer

Optimal performance with DIGIC III, i-Contrast and Smart Flash Exposure

Creative modes include Low Light, Super Vivid and Poster Effect

Rechargeable Li-ion battery

Movies and YouTube Uploader

*Some colour variations may not be available in some regions

Smart
AUTO

12.1
MEGA
PIXELS

4x
OPTICAL
ZOOM

OPTICAL
IMAGE
STABILIZER

6.7 cm
2.7" LCD

Movie
30fps / VGA



Available in three colours



PowerShot A495

Fun, pocket-sized
and easy to use



Available in
three colours

Affordable, easy and fun, the PowerShot A495 uses Canon know-how to let everyone take great 10 Megapixel photos. Available in 3 colours, its compact, lightweight design slips easily into any pocket.

Key features

Compact, lightweight 10.0 Megapixel camera in three colour variations*

Genuine Canon 3.3x optical zoom lens

6.2cm (2.5") LCD for easy sharing and picture taking

Smart Auto with Scene Detection Technology for effortless shooting in a variety of conditions

Simple button layout and easy to use interface

Creative modes including Low Light, Super Vivid and Poster Effect

People shots made easy with Face Detection, FaceSelf-Timer & Auto Red-Eye Correction

DIGIC III image processing delivers natural results and responsive performance

Combats blur with Motion Detection Technology

Long Play Movies with sound

AA Batteries

*Some colour variations may not be available in some regions

Smart Auto is truly automatic and the user can shoot knowing that the camera will take care of everything. Each scene is analysed with the camera deciding the optimum settings, from a choice of 18 scenes here, up to 28 different scene types on top models.

10.0
MEGA
PIXELS

3.3x
OPTICAL
ZOOM

6.2cm
2.5"
LCD

Movie
30fps / VGA

16
SHOOTING
MODES

Enhance and expand your creativity



Speedlite
430EX II



Waterproof case
WP-DC34



Protect Filter
67mm



Macro Ring Lite
MR-14EX



Teleconverter
TC-DC58D



Filter Adapter
FA-DC58B

Canon has a great range of accessories for its award-winning digital compact cameras. From Lens Filter Adapters to Speedlite flashes, waterproof and premium leather cases to tele-converters, Canon's accessories will protect your camera and enhance your photography

Canon Speedlite flash accessories

An external flash can add a new dimension to your pictures. Use a Canon Speedlite as your main flash to give extra light to your shots or use it as a slave unit for more creative shooting such as lighting more than one part of a scene.

Waterproof cases

Specially designed waterproof cases and weights open up the world of underwater photography at depths down to 40 metres – while an underwater scene mode optimises camera settings for aquatic environments. Waterproof cases can also be handy on land to protect against snow, sand, dust and humidity.

Lens Filter Adapters

Filters give you the ability to enhance the image and be more creative. The Lens Filter Adapters accept various filters such as polarizers which can help enrich the colour of a blue sky or minimize reflections from shiny surfaces. The Lens Filter Adapter is available for the PowerShot SX30 IS and the G12 (also backwards compatible with the G10 and the G11).

Teleconverter

The PowerShot G12 accepts the TC-DC58D tele-converter which extends the camera's zoom range by 1.4x. Requires the use of the LA-DC58K conversion lens adapter.

Batteries and AC Power Adapters

Never run out of power again. Extra batteries, battery chargers and AC adapter kits let you shoot photos and video for longer – or review images without worrying about battery life.

Genuine leather softcases & Neckstraps

Keep your camera looking as good as the day you got it with a premium leather soft case. IXUS neckstraps add extra comfort for when you're out and about.



With Polarizer



Without Polarizer

Accessories compatibility

IXUS

	IXUS 1000 HS	IXUS 300 HS	IXUS 210	IXUS 130	IXUS 105
WATERPROOF CASES					
Waterproof Case WP-DC36					✓
Waterproof Case WP-DC37*				✓	✓
Waterproof Case Weight WW-DC1				✓	✓
SOFT CASES					
DCC-60					✓
DCC-70			✓		
DCC-1100				✓	
DCC-1200				✓	
DCC-1700	✓				
FLASH					
High Power Flash HF-DC1	✓	✓		✓	✓
POWER SUPPLY & BATTERY CHARGERS					
Battery Charger CB-2LBE	✓				
Battery Charger CB-2LVE				✓	✓
Battery Charger CB-2LYE			✓	✓	✓
AC Adapter Kit ACK-DC10				✓	✓
AC Adapter Kit ACK-DC40			✓	✓	✓
AC-Adapter Kit ACK-DC60				✓	✓
AC-Adapter Kit ACK-DC70	✓				
BATTERIES					
Battery Pack NB-9L	✓				
Battery Pack NB-6L		✓	✓		✓
Battery Pack NB-4L				✓	
OTHER MISCELLANEOUS					
A/V Cable AVC-DC400			✓	✓	✓
A/V Cable AVC-DC400ST	✓	✓			
Digital IXUS Metal or Leather Strap	✓	✓	✓	✓	✓
HDMI Cable HTC-100	✓	✓	✓	✓	✓
USB Interface Cable IFC-400PCU	✓	✓	✓	✓	✓

* not all functions supported

** compatible with Protect Filter 58 mm or Polarizing Filter PL-C(B) 58 mm

*** compatible with Protect Filter 67 mm or Polarizing Filter PL-C(B) 67 mm

**** not designed for underwater



Softcase
DCC-1200



Softcase
SC-DC65A

PowerShot

	PowerShot G12	PowerShot S95	PowerShot SX30 IS	PowerShot SX210 IS	PowerShot SX130 IS	PowerShot SX120 IS	PowerShot D10	PowerShot A3100 IS	PowerShot A495
WATERPROOF CASES									
WP-DC34 (waterproof to 40 m)	✓								
WP-DC38 (waterproof to 40 m)		✓							
Waterproof Case weight WW-DC1	✓	✓							
SOFT CASES									
SC-DC65A	✓								
SC-DC70									
DCC-480							✓		
DCC-660	✓								
DCC-750					✓				
DCC-850			✓						
DCC-1450		✓							
DCC-1500				✓					
DCC-1600	✓								
CONVERSION LENSES									
Tele Converter TC-DC58D	✓								
Conversion Lens Adapter LA-DC58K	✓								
Filter Adapter FA-DC58B**	✓								
Filter Adapter FA-DC67A***				✓					
Lens Hood LH-DC60			✓						
FLASH									
Bracket BKT-DC1	✓								
High Power Flash HF-DC1	✓	✓		✓	✓	✓	✓	✓	✓
Macro Ring MR-14EX	✓								
Macro Twin Lite MT-24EX	✓								
Off-Camera Shoe Cord OC-E3			✓						
Speedlite S80EXII, 430 EX (II), 270EX, 220EX*	✓		✓						
Speedlite Bracket SB-E2	✓		✓						
Speedlite Transmitter ST-E2	✓		✓						
POWER SUPPLY & BATTERY CHARGERS									
Battery Charger CB-2LAE									✓
Battery Charger CB-2LXE				✓					
Battery Charger CB-2LYE		✓						✓	
Battery Charger CB-2LZE	✓	✓	✓						
Charger Kit CBK4-300					✓	✓			✓
AC Adapter Kit ACK 800					✓	✓			✓
AC Adapter Kit ACK-DC30				✓					
AC Adapter Kit ACK-DC40		✓					✓		
AC Adapter Kit ACK-DC50	✓		✓						
AC Adapter Kit ACK-DC60								✓	
BATTERIES									
Battery Pack NB-8L									✓
Battery Pack NB-7L	✓		✓						
Battery Pack NB-6L		✓					✓		
Battery Pack NB-5L				✓					
Ni-MH Batteries NB4-300					✓	✓			✓
OTHER MISCELLANEOUS									
AV Cable AVC-DC300									✓
AV Cable AVC-DC400									✓
AV Cable AVC-DC400ST	✓	✓	✓	✓	✓				
Carabiner Strap STP-DC2****								✓	
Shoulder+Neckstrap STP-DC1****								✓	
Front Cover Set FC-DC1								✓	
HDMI Cable HTC-100	✓	✓	✓	✓					
Remote Switch RS-60E3	✓								
Ring Accessory Kit RAK-DC2	✓								
USB Interface Cable IFC-400PCU	✓	✓	✓	✓	✓	✓	✓	✓	✓

Perfect Pictures

& Easy Sharing

Sharing pictures is fun, and Canon makes this easy with a wide range of options that will help your images reach friends all around the world.

CANON iMAGE GATEWAY is an exclusive online photography resource and service for owners of qualified Canon products. As a valued member, you can upload and share your photos and videos with friends, family and anyone else you choose. You will also have access at any time to informative photography-related articles on topics such as macro shooting, portrait photography and more, that will allow you to get the most out of your photography.

CANON
iMAGE
GATEWAY



EYE FI

For users who want to transfer content wirelessly, some models in the range include Eye-Fi connected* functions. A dedicated Eye-Fi section in the menu is included with on-screen icons to indicate the transfer status and the cameras will disable the automatic power-down function when an Eye-Fi card is detected – allowing users to transfer content easily and without interruption.



* This product is not guaranteed to support Eye-Fi card functions (including wireless transfer). In case of an issue with an Eye-Fi card, please check with the card manufacturer. Also note that approval is required to use Eye-Fi cards in many countries or regions. Without approval, use of the card is not permitted. If it is unclear whether the card has been approved for use in the area, please check with the card manufacturer. www.eye.fi

On selected models, a **YouTube™** upload function is integrated into the included CameraWindow software. Users who have setup an account with YouTube™ can login and upload video clips from their PC at the touch of a button.



Digital Photo Professional

Digital Photo Professional (DPP) helps enthusiast users to make the most of RAW images. Included in the box for the PowerShot G and S series, DPP allows you to quickly adjust and fine-tune image parameters such as white balance, exposure, tone and sharpness. You can also batch process images easily into a variety of formats ready for printing and sharing.

ZoomBrowser EX

Each Canon digital camera and SELPHY Compact Photo Printer includes special image management software - ZoomBrowser EX (Windows) or ImageBrowser (Mac) - designed to help you make the most of your images and movies. Sort your images into groups for easy reference, use the retouching and editing tools and share your favourite shots with easy emailing and CANON iMAGE GATEWAY.



Digital Photo Professional



ZoomBrowser EX

Bring photos to life

SELPHY

With a SELPHY Compact Photo Printer you can instantly turn your photos into beautiful, long-lasting prints in seconds – as well as experiment with creative effects, layouts and printing formats.



From pixel to print

It's easy to share your pictures with SELPHY. From the moment the picture is taken to the second it is printed out, every stage of the printing process is simple and fuss-free thanks to Canon's intelligent technologies and user friendly design.


Lab-quality prints are made possible with dye-sublimation technology and will last up to 100 years when stored in an album. Thanks to the special protective coating every print is completely dry and resistant to water, fingerprints and scratches.

SELPHY lets you produce prints of different sizes, and with the ES40 creative layouts and effects such as calendars, clip art borders and frames are possible, so you can be creative when sharing your treasured pictures with friends and family. It's the modern, convenient and simple way to share images.



100
YEARS
PRINT

Dye-Sub



Three steps to great prints



Step 1. Capture & Connect

Canon's IXUS and PowerShot digital cameras have been designed for ease-of-use, and so have SELPHY printers. All you need to do is capture the moment and connect. Any PictBridge compliant camera can connect directly via USB cable. Alternatively, print via computer or simply insert your memory card. The optional Bluetooth adapter (BU-30) can also be used to allow wireless transfer of images, perfect for shots taken on other Bluetooth compatible devices.

Step 2. Display & Select

Images can be easily viewed before printing, too. Simply scroll to the image you want, press Print and a dry, long lasting print will be in your hands in under a minute.



Step 3. Print and Enjoy

With a range of paper sizes to choose from, you can print postcard size prints or even small photo stickers. SELPHY printers produce a lab-quality print in under a minute. The SELPHY CP800 has an optional battery so that you can take it with you and print up to 36 shots on a single charge.

SELPHY ES40

High-quality, creative prints that will last for generations.

The SELPHY ES40 is an advanced compact photo printer with built-in voice guidance, a large 3.5 inch LCD screen and creative printing modes to help create long lasting, high-quality prints with ease.



Key features

Advanced, easy to use compact photo printer with built-in voice guidance (7 languages)

Large high-resolution 3.5" LCD

"Easy Photo Pack" with integrated ink and paper

Easy Scroll Wheel makes browsing and navigating images a breeze

Creative Print options with fun layouts, borders, stamps and effects including Smooth Skin

Auto Image Optimize corrects images using noise reduction, red-eye removal, face brightness and colour correction

DIGIC II for high image quality, fast processing and startup speed

Wireless printing via optional Bluetooth adaptor

Print direct from memory cards or via PictBridge

SELPHY Photo Print software



Creative Print



Voice Guidance

Built-in voice guidance provides friendly assistance for printing and editing. Create your own calendar; choose decorative frames, or add clip art and speech bubbles to your prints with the Creative Print button.

Memory Card Slots





SELPHY CP800



Automatic Image Optimize detects and corrects image imperfections, adjusting face brightness and colour while reducing unwanted noise, giving your prints extra clarity and richness.

Key features

Stylish, ultra-compact photo printer in two colour variations*

Easy operation with tilting 6.2 cm (2.5") LCD

Instant printing in less than 1 minute and no waiting for start-up

Range of print options and sizes including postcard, L, card, and stickers

No hassle, lab quality prints with Auto Image Optimize, Smooth Skin, and Auto Red-Eye Correction

Print direct from memory cards, PictBridge compatible cameras and USB stick

Long-lasting 100 year prints

ID Photo layout and Shuffle layout

Print on the move with optional battery pack or Bluetooth adapter for mobile printing

SELPHY Photo Print software with voice guidance

*Some colour variations may not be available in some regions

Memory Card Slots



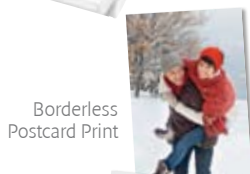
The ultra-stylish, ultra-easy home photo lab



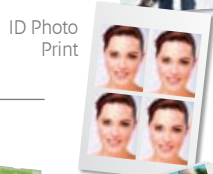
With a design that fits into any home the SELPHY CP800 is the convenient way to create lasting prints from your digital photos. Insert your card, press print, and in less than 1 minute it's ready.

Keep your SELPHY busy!

Canon is dedicated to providing you with many different ways to share your memories. From Mini stickers to Credit Card size media to Postcard packs, there's a solution for everyone.



Borderless Postcard Print



ID Photo Print



Mini Stickers

Easy Photo Pack

For use with SELPHY ES series



E-C25

Ink Paper Set
Credit Card Size
(25 sheets)



E-C25L

Ink Paper Set
Credit Card Size
Stickers
(25 sheets)



E-L50

Ink Paper Set
L Size
(50 or 100 sheets)



E-P25BW

Ink Paper Set
B/W Postcard Size
(25 sheets)



E-P50/E-P100 Ink

Paper Set
Postcard Size
(50 or 100 sheets)

Ink and paper sets

For use with SELPHY CP series



KC-181F

Ink Paper Set
Credit Card Size
Stickers
(18 sheets)



KC-181L

Ink Paper Set
Mini Stickers
(18 sheets)



KC-361P

Ink Paper Set
Credit Card
Size
(36 sheets)



KL-361P

Ink Paper Set
L Size
(36 sheets)



KP-361P

Ink Paper Set
Postcard Size
(36 sheets)



KP-721N/1081N

Ink Paper Set
Postcard Size
(72 or 108 sheets)

SELPHY Range



	SELPHY CP800	SELPHY ES40
Print Method	Dye-sublimation thermal transfer	Dye-sublimation thermal transfer, with DIGIC II processor
Ink / Paper Cartridge	Separate Ink Cartridge and Paper	Integrated Ink and Paper Cartridge
Print Speed	Postcard size: approx. 47 sec ⁽¹⁾	Postcard size: approx. 55 sec ⁽¹⁾
Print Sizes Postcard (148 x 100 mm) L (119 x 89 mm) Credit Card (86 x 54 mm) Credit Card Stickers (86 x 54 mm) Mini-Stickers (22.0 x 17.3 mm)	Postcard L ⁽²⁾ Credit Card ⁽²⁾ Credit Card Stickers ⁽²⁾ Mini Stickers (x8 stickers on one sheet) ⁽²⁾	Postcard L Credit Card Credit Card Stickers
Creative Printing Modes	Shuffle Layout	Frame, Clip Art, Calendar, Multi Layout, Speech Bubble, ID Photo, Image Effects
ID Photo Printing	Yes (3 Sizes on one sheet) ⁽³⁾	Yes
Print Longevity	100 Years Print ⁽⁴⁾	100 Years Print ⁽⁴⁾
Print Direct from a PictBridge Device	Yes	Yes
Print Direct from a Memory Card	Yes ⁽³⁾	Yes ⁽³⁾
Print Direct from a Camera Phone	Yes, with optional Bluetooth Unit BU-30 ⁽⁵⁾	Yes, with optional Bluetooth Unit BU-30 ⁽⁵⁾
Print Direct from a Computer	Yes, requires standard USB cable	Yes, requires standard USB cable
Print Direct from USB Flash Memory	Yes ⁽⁶⁾	-
LCD Monitor	6.2 cm (2.5") Colour TFT with tilt mechanism	8.8 cm (3.5") Colour TFT
Easy Scroll Wheel	-	Yes
Software Supplied	SELPHY Photo Print	SELPHY Photo Print
Built in Voice Guidance	-	Yes - 7 language support
AC Power Supply	External, supplied	Built in to printer
Battery Pack	Optional	-
Accessories	CP Printer Carrying Case DCC-CP2 L size Paper Cassette [PCL-CP300] Card Size Paper Cassette [PCC-CP30 0] Battery Pack NB-CP2L BU-30 Bluetooth Unit	BU-30 Bluetooth Unit
Dimensions	177.0 x 134.6 x 68.8 mm (printer only without protrusions)	226.3 x 225.0 x 138.0 mm
Weight	940 g (Excluding Ink Cartridge and Paper Cassette)	2090 g (Excluding Integrated Ink and Paper Cartridge)

- Not Applicable

All data is based on Canon's standard testing methods.
Subject to change without notice.

- (1) Print speed can vary dependent on data size, print method, memory card and capacity and is measured from start of printing excluding paper handling
- (2) Requires optional paper cassette
- (3) See full specifications for details
- (4) To test the image permanence of prints that are stored in an album, we use an accelerated testing method similar to how the image permanence of silver-halide photo papers are measured when stored in dark places. Print samples are printed with the optical density of 1.0 (each BK, C, M, Y). The samples are kept in a certain environment of high temperature and 50% humidity. The rate of the decrease in the optical density and rate of yellow discoloration are recorded. The recorded results are then converted to the length of time when print image is kept in an environment of 23°C/ 50% humidity. <Criteria for estimation of print longevity> The point where monochromatic/ reflective optical density shows loss of 30% (starting density of 1.0).
- (5) Mobile phones and PDA's must be Bluetooth enabled and support Bluetooth version 1.1 or above Photo printing only - pictures must be in the JPEG format. Bluetooth operation depends on the device and software version used
- (6) Irregularly sized images, or images that have been edited on a computer may not display or print. USB Devices that are not identified as "Removable media" (such as external hard drives) or do not use the FAT or exFAT file system or have GUID partition tables created on a Macintosh computer are not supported.

IXUS and PowerShot Range

PowerShot



	A495	A3100 IS	D10	SX120 IS	SX130 IS	SX210 IS
Colour variation						
Resolution	10 MP	12.1 MP	12.1 MP	10 MP	12.1 MP	14.1 MP
Processor	DIGIC III	DIGIC III	DIGIC 4	DIGIC 4	DIGIC 4	DIGIC 4
f/number	f/3.0 - 5.8	f/2.7 - 5.6	f/2.8 - 4.9	f/2.8 - 4.3	f/3.4 - 5.6	f/3.1 - 5.9
Zoom Range (focal length in 35mm equivalent)	37 - 122 3.3x Optical	35 - 140 4x Optical	35 - 105 3x Optical	36 - 360 10x Optical	28 - 336 12x Optical	28 - 392 14x Optical
Macro	1 cm	3 cm	3 cm	1 cm	1 cm	5 cm
Optical Image Stabilizer	3-stop	3-stop	3-stop	3-stop	3-stop	4-stop, Dynamic IS
Max ISO value	1600	1600	1600	1600	1600	1600
Screen	6.2 cm (2.5")	6.7 cm (2.7")	6.2 cm (2.5")	7.5 cm (3.0")	7.5 cm (3.0")	7.6 cm (3.0") 16:9 aspect ratio
Viewfinder						
Smart Auto scenes	18 scenes	18 scenes	18 scenes	18 scenes	28 scenes	22 scenes
Selectable shooting modes	16 modes	18 modes	20 modes	20 modes	22 modes	23 modes
Manual Control				Full	Full	Full
RAW						
HD Movie					HD (720p)	HD (720p)
HDMI						Yes
Battery type	2x AA	Li-ion NB-8L	Li-ion NB-6L	2x AA	2x AA	Li-ion NB-5L
Weight (incl. battery and card)	175 g	155 g	212 g	291 g	308 g	215 g
Size (L x H x W mm)	93.5 x 61.7 x 30.6	97.2 x 58.2 x 28.1	103.6 x 66.9 x 48.8	110.6 x 70.4 x 44.7	113.3 x 73.2 x 45.8	105.8 x 59.3 x 31.9
Soft case	DCC-480	DCC-480	SC-DC70	DCC-750	DCC-750	DCC-1500
Waterproof case			Waterproof to 10m			
Highlights	Canon image quality at a great price	Smart Auto and Easy mode	Shock-proof, waterproof, freeze-proof and dust-proof	Easy superzoom for all the family	Great value wide angle, 12x zoom	Super compact super zoom

IXUS



			SX30 IS	S95	G12	IXUS 105	IXUS 130	IXUS 210	IXUS 300 HS	IXUS 1000 HS
			14.1 MP	10.0 MP (high sensitivity)	10.0 MP (high sensitivity)	12.1 MP	14.1 MP	14.1 MP	10.0 MP (back illuminated)	10.0 MP (back illuminated)
			DIGIC 4	DIGIC 4 [HS System]	DIGIC 4 [HS System]	DIGIC 4	DIGIC 4	DIGIC 4	DIGIC 4 [HS System]	DIGIC 4 [HS System]
			f/2.7 - 5.8	f/2.0 - 4.9	f/2.8 - 4.5	f/2.8 - 5.9	f/2.8 - 5.9	f/2.8 - 5.9	f/2.0 - 5.3	f/3.4 - 5.6
840										
35x Optical										
24										
			105	140		112	112	120	105	360
			3.8x Optical	5x Optical		4x Optical	4x Optical	5x Optical	3.8x Optical	10x Optical
			28	28		28	28	24	28	36
			0 cm	5 cm	1 cm	3 cm	3 cm	5 cm	3 cm	1 cm
			4-stop. Dynamic IS	4-stop. Hybrid IS	4-stop. Hybrid IS	3-stop	3-stop	3-stop	3-stop	4-stop. Dynamic IS
			1600	3200	3200	1600	1600	1600	3200	3200
			6.8 cm (2.7") Vari-angle	7.5 cm (3.0")	7.0 cm (2.8") Vari-angle	6.8 cm (2.7")	6.9 cm (2.7")	8.8 cm (3.5") Touch screen	7.5 cm (3.0") 16:9 aspect ratio	7.6 cm (3.0") 16:9 aspect ratio
			Electronic	Optical	Optical					
			28 scenes	28 scenes	28 scenes	18 scenes	22 scenes	22 scenes	28 scenes	28 scenes
			24 modes	26 modes	27 modes	15 modes	20 modes	19 modes	21 scenes	21 scenes
			Full	Full	Full				Av/Tv	
			Yes	Yes	Yes					
			HD (720p)	HD (720p)	HD (720p)		HD (720p)	HD (720p)	HD (720p)	Full HD (1080p)
			Yes	Yes	Yes		Yes	Yes	Yes	Yes
			Li-ion NB-7L	Li-ion NB-6L	Li-ion NB-7L	Li-ion NB-6L	Li-ion NB-4L	Li-ion NB-6L	Li-ion NB-6L	Li-ion NB-9L
			601 g	193 g	401 g	140 g	133 g	160 g	175 g	190 g
			122.9 x 92.4 x 107.7	99.8 x 58.4 x 29.5	112.1 x 76.2 x 48.3	90.5 x 55.8 x 21.2	92.2 x 56.1 x 17.8	99.3 x 55.7 x 22	100 x 54.1 x 23.6	101.3 x 58.5 x 22.3
			DCC-850	DCC-1450	DCC-660, SC-DC65A, DCC-1600	DCC-60	DCC-1200	DCC-1100	DCC-70	DCC-1700
				WP-DC38 (40m)	WP-DC34 (40m)	WP-DC36 (40m)	WP-DC37 (40m)			
Range leading zoom and Image Stabilizer			Lens Control Ring	Extensive accessories range including Lens Filter Adapter	Slim wide-angle IXUS for everyday shooting	Slimmest camera in the range	Full touchscreen control	High speed shooting and Super Slow Motion Movie	Slimmest 10 x optical zoom and HS System with CMOS sensor	

IXUS ***PowerShot*** **SELPHY**
COMPACT PHOTO PRINTER

Product names, logos, brands and other trademarks referred to within this publication are the property of their respective trademark holders.

Canon Inc.
canon.com

Canon Europe
canon-europe.com

English Edition 0146W148
Canon Europa N.V., 2010

Canon (UK) Ltd
Woodhatch
Reigate
Surrey
RH2 8BF
Telephone no 01737 220000
facsimile 01737 220022
www.canon.co.uk

Canon