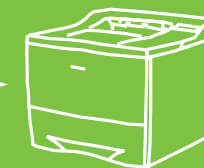


SAMSUNG



DigitAll *wireless*

Wireless enabled



One-touch duplex printing

		ML-2550	ML-2551N	ML-2552W
Print	Speed *	Up to 24 ppm in A4 (25 ppm in Letter)	Up to 24 ppm in A4 (25 ppm in Letter)	Up to 24 ppm in A4 (25 ppm in Letter)
	Resolution	Up to 1,200 x 1,200 dpi effective output	Up to 1,200 x 1,200 dpi effective output	Up to 1,200 x 1,200 dpi effective output
	First Print Out Time	12 seconds	12 seconds	12 seconds
Controller	Processor	Samsung 266 MHz	Samsung 266 MHz	Samsung 266 MHz
	Memory	32 MB (Max. 160 MB)	32 MB (Max. 160 MB)	32 MB (Max. 160MB)
	Emulation	Post Script3, PCL6, IBM ProPrinter, EPSON	Post Script3, PCL6, IBM ProPrinter, EPSON	Post Script3, PCL6, IBM ProPrinter, EPSON
	Interface	USB 2.0, IEEE1284 Parallel	USB 2.0, IEEE1284 Parallel	USB 2.0, IEEE1284 Parallel
			Ethernet 10/100 Base TX	Ethernet 10/100 Base TX + 802.11b Wireless LAN
Paper Handling	Input Capacity and Types	45 Scalable, 1 Bitmap, 136 PostScript3 Fonts	45 Scalable, 1 Bitmap, 136 PostScript3 Fonts	45 Scalable, 1 Bitmap, 136 PostScript3 Fonts
		Windows 95/98/Me/NT4.0/2000/XP, Various	Windows 95/98/Me/NT4.0/2000/XP, Various	Windows 95/98/Me/NT4.0/2000/XP, Various
	OS Compatibility	Linux OS including Red Hat, Caldera, Debian, Mandrake, Slackware, SuSE and Turbo Linux, Mac OS 8.6-9.2/10.1-10.3	Linux OS including Red Hat, Caldera, Debian, Mandrake, Slackware, SuSE and Turbo Linux, Mac OS 8.6-9.2/10.1-10.3	Linux OS including Red Hat, Caldera, Debian, Mandrake, Slackware, SuSE and Turbo Linux, Mac OS 8.6-9.2/10.1-10.3
	Output Capacity and Types	500-sheet Cassette Tray	500-sheet Cassette Tray	500-sheet Cassette Tray
		100-sheet Multi Purpose Tray	100-sheet Multi Purpose Tray	100-sheet Multi Purpose Tray
	Duplex	250-sheet Face Down, 100-sheet Face Up	250-sheet Face Down, 100-sheet Face Up	250-sheet Face Down, 100-sheet Face Up
		Built-in	Built-in	Built-in
	Media size	76x127 mm (3"x5") ~ 216x356 mm(8.5"x14")	76x127 mm (3"x5") ~ 216x356 mm(8.5"x14")	76x127 mm (3"x5") ~ 216x356 mm(8.5"x14")
		Transparencies, Labels, Post Card, Envelope	Transparencies, Labels, Post Card, Envelope	Transparencies, Labels, Post Card, Envelope
General	Dimension (W x D x H)	386x436x326 mm (15.2"x17.2"x12.8")	386x436x326 mm (15.2"x17.2"x12.8")	386x436x326 mm (15.2"x17.2"x12.8")
	Weight	13.5 Kg (29.8 lbs)	13.5 Kg (29.8 lbs)	13.5 Kg (29.8 lbs)
	Noise Level **	Less than 53 dBA (Printing)	Less than 53 dBA (Printing)	Less than 53 dBA (Printing)
		Less than 35 dBA (Standby)	Less than 35 dBA (Standby)	Less than 35 dBA (Standby)
Consumables	Type	Single Cartridge	Single Cartridge	Single Cartridge
	Yield	10,000 Pages at IDC 5% coverage	10,000 Pages at IDC 5% coverage	10,000 Pages at IDC 5% coverage
		(Ships with 5,000 pages Starter Toner Cartridge)	(Ships with 5,000 pages Starter Toner Cartridge)	(Ships with 5,000 pages Starter Toner Cartridge)
Options	Model Code	ML-2550DA	ML-2550DA	ML-2550DA
		Ethernet 10/100 Base TX (Internal), Ethernet 10/100 Base TX + 802.11b	Ethernet 10/100 Base TX + 802.11b	N/A
		Wireless LAN (Internal)	Wireless LAN (Internal)	
	Others	500-sheet Cassette Tray	500-sheet Cassette Tray	500-sheet Cassette Tray
		Memory : 16 MB, 32 MB, 64 MB, 128 MB	Memory : 16 MB, 32 MB, 64 MB, 128 MB	Memory : 16 MB, 32 MB, 64 MB, 128 MB

❖ Please visit www.samsungprinter.com to download the latest software version.
* Print speed will be affected by operating system used, computing performance, application software, connecting method, media type, media size and job complexity.
** Sound Pressure Level, ISO7779

Distributed by

SAMSUNG DIGITall
everyone's invited™

www.samsungprinter.com

The new wireless enabled printers
ML-2550, ML-2551N and ML-2552W

SAMSUNG DIGITall
everyone's invited™

www.samsungprinter.com

Unplug in style with the new wireless enabled printer range from Samsung. Featuring high performance with the latest cost saving features, the ML-2550, ML-2551N and ML-2552W models offer an ideal solution for your workgroup printing needs.

Outstanding Performance

The enhanced capabilities of the ML-2550, ML-2551N and ML-2552W give you the advanced digital performance to upgrade your business.

- Wireless LAN (802.11b) printing : Find another use for all those old printer cables, because now you won't need them any more.
- Ultra-fast interface : the standard USB 2.0 port means you can say goodbye to all those annoying bottlenecks between PC and printer.
- Print speed (A4) : With high-speed 266 MHz CPU and 32MB (up to 160MB) memory, your volume tasks are ready in no time, at up to 24 pages per minute.
- Resolution : crisp image reproduction with up to 1,200 x 1,200 dpi effective output resolution
- Large paper & toner capacity : Maximum 1,100-sheet paper cassette (with an optional 500 sheet 2nd cassette) and immense 10,000-page yield toner cartridge let you free from frequent troublesome work.

Advanced Digital Capability

The Samsung ML-2550, ML2551N and ML-2552W printers are packed with technological innovations designed to save you time and paper, add extra convenience and increase your business productivity.

- One-touch duplex printing : this convenient feature lets you create double-sided print-outs at the touch of a button. (Duplex printing via driver setting is also available.)



WIRELESS NETWORK



DUPLEX PRINT BUTTON



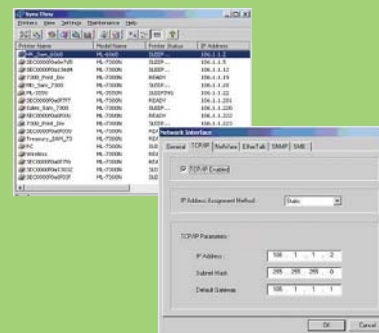
SAVE BUTTON



USB 2.0 INTERFACE

Solid Network Solution

- Wireless Network : Networkable via an Ethernet 10/100 Base TX network adapter or a combination of 10/100 Base TX and 802.11b wireless NIC, either as options or standard configuration.
- SyncThru : Samsung's remote printer management software tool that enables you to install, control and manage Samsung network printers on your network, included as standard.



WIRELESS NETWORK

Network solution : wireless LAN (ML-2552W) and Ethernet 10/100 base TX



Dual Interface : ultra fast USB 2.0 and IEEE1284 dual ports.



Paper Capacity : 500-sheet cassette + 100-sheet multi-purpose tray
500-sheet 2nd cassette option

Maximum Compatibility

- Various OS System Support : ML-2550, ML-2551N and ML-2552W are compatible with a wide range of operating systems including Windows, Linux and Macintosh. (Macintosh for ML-2551N, ML-2552W and for ML-2550 with PostScript3 option)

- Easy driver installation : with only 4 clicks, you're ready to use your printer without having to shut down and restart your PC, so you're faster than the competition.

LCD

Easy operation : large, clear LCD display (2 lines x 16 characters)

DUPLEX PRINT BUTTON



Easy duplex printing: one-touch duplex print button



SAVE BUTTON

Cost saving : one-touch 40% toner saving



Fast print speed (A4) : Up to 24 pages/minute

Memory : 32 MB (expandable to 160 MB)

The ML-2550, ML-2551N and ML-2552W wireless enabled printers are the better way to manage your network printing needs, without all those annoying cables. We call that **DigitAll wireless** from Samsung.

SAMSUNG DIGITall
everyone's invited™

www.samsungprinter.com